

NWSW Shelter Cluster Meeting

4th May 2022

Teams Meeting



Cameroon Shelter Cluster
ShelterCluster.org
Coordinating Humanitarian Shelter

Action Points from Last

Action Point	Update from Cluster Team/Partners
Shelter Cluster Partners to provide inputs and feedback to Activity matrix	Updates from Strategy workshops to be presented in today
Shelter Cluster partners to provide feedback to the Assessment Tracker	Circulated with 5W for inputs
5W Tool	Updates to tool made- request for March reports are due on 10 th May; Updates in today's meeting
Shelter Cluster Partners to review Access Strategy and provide any feedback on relevant Shelter access issues	-
GBV Referrals and Constant Companion	Training Dates to be shared by GBV AoR in May

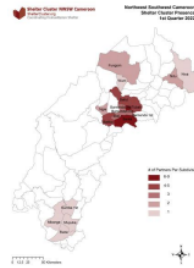


March Factsheet

Global Shelter Cluster
ShelterCluster.org
Coordinating Humanitarian Shelter

North West South West

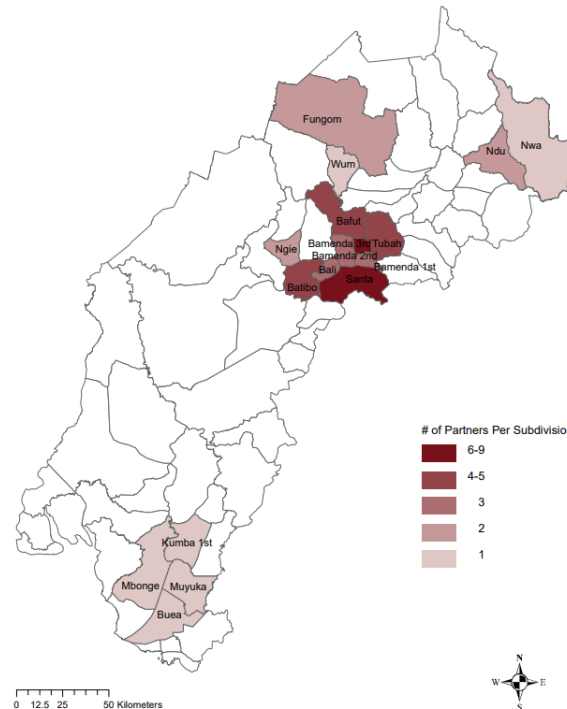
March 2022



<https://sheltercluster.org/north-west-south-west/factsheets/2022-03>

Shelter Cluster NSW Cameroon
ShelterCluster.org
Coordinating Humanitarian Shelter

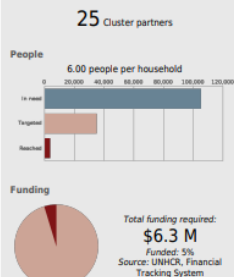
Northwest Southwest Cameroon
Shelter Cluster Presence
1st Quarter 2022



HIGHLIGHTS

During the reporting month, Shelter Cluster partners continued to implement, while mostly conducting activities for beginning the implementation of their programs in the second quarter of the year. In the month of March, the Shelter Cluster introduced an [interactive dashboard](#) to operationalize the information that partners are reporting from the Cluster 5W and to improve coordination between partners. During the Shelter Cluster meeting for the month of April, partners gave their feedback on eventual updates they would like to see in this dashboard. The Shelter Cluster continues to work with a Kobo tool to improve the accuracy of information that partners are reporting. From this dashboard, one can see that 60% of activities reported to the cluster are still planned. The Shelter Cluster also noted that there is a need to strengthen reporting of activities particularly in the Southwest region. Most of the activities are in non-food items and not yet in shelter, which highlights the gap for this pressing need in the field. It is therefore also essential, that the Cluster continue to identify improved shelter strategies for IDPs, returnees, and non-displaced particularly in the NW, where shelter assistance was limited in the previous year. The Shelter Cluster conducted a review of the data shared by Plan International on a household assessment funded by UNHCR and compared it with the data shared by IOM and OCHA from the recent Multi-sectoral Needs Assessment. Cluster Partners will be reviewing and analyzing the assessments in workshops coming up in April.

KEY FIGURES



KEY DATES

- 15/03/2021: Cluster SAG meeting to discuss and present content of shelter kits to authority
- 17/11/2020: Meeting the North West Governor's office to discuss with rejected items within the shelter kits
- 10/18/2018: Activation of the Cluster
- 4/15/2021: Last Update of Strategy

KEY DOCUMENTS

- shelter_cluster_strategy_2021_nsw_version_3
- Jan-Feb 2022 Cumulative Number of Individuals Reached NSW Cameroon
- NSW Cameroon Shelter Cluster Coordination Performance Monitoring 2022



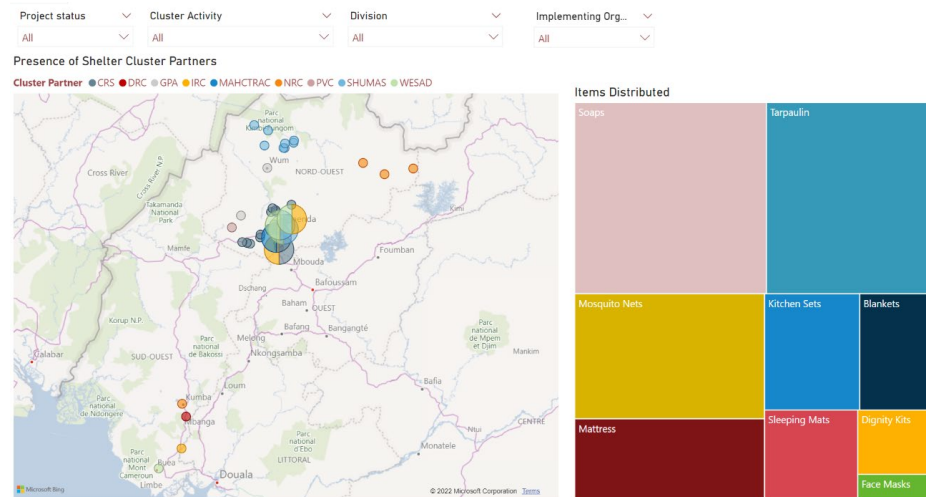
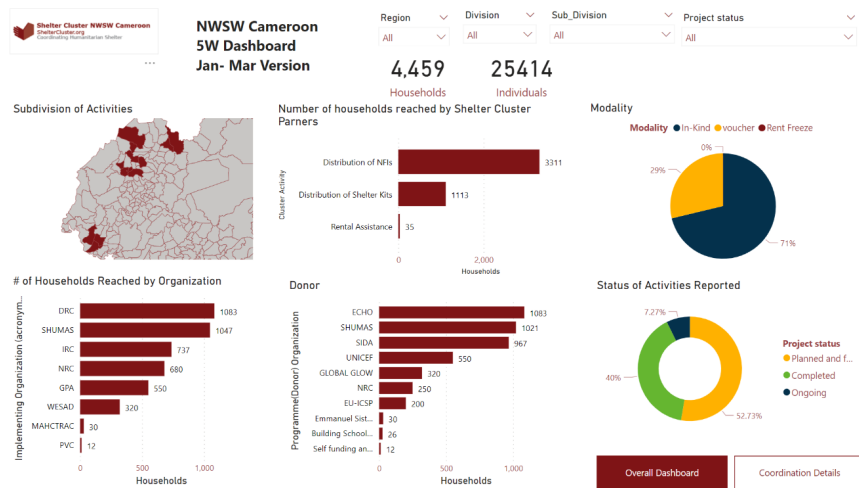
COVERAGE AGAINST TARGETS

6.00 people per household



Cameroon Shelter Cluster
ShelterCluster.org
Coordinating Humanitarian Shelter

Dashboard for Operational Coordination



5W



Questions on Kobo Tool: <https://enketo.unhcr.org/x/q1JyQvk8>



One entry per location – this time with gps points



New Deadline: 10th May



Please do get in touch if having challenges



Need to report planned activities for improved coordination



Cameroon Shelter Cluster
ShelterCluster.org
Coordinating Humanitarian Shelter

Results of April Workshops

Northwest











Setting	Settlement Scenario	Shelter	Structure	Roofs
Urban	Renting, Owner, Hosting, Squatting Public/Private	House Apartment Collective Shelter (rare)	Concrete, Cement, Sundried/Mudbrick	CGI, Thatch
Semi-Urban	Renting, Owner, Hosting, Informal Settlements, Squatting Public/Private	House, Apartment, Makeshift Shelter Collective Shelter	Concrete is less than urban, Sundried/Mudbrick	CGI, Thatch
Rural	Owner, Hosting, Informal Settlements, Squatting Public/Private	House, Makeshift Shelter, Farm/Agricultural house or infrastructure	Bamboo, Thatch, Wood	Zinc, Thatch

Southwest

Setting	Settlement Scenario	Shelter	Structure	Roofs
Urban	Renting, Owner, Hosting, Squatting Public/Private	House Apartment Collective Shelter (rare)	Concrete, Cement, Timber Wood	CGI * (Plywood ceilings)
Semi-Urban	Renting, Owner, Hosting, Informal Settlements, Squatting Public/Private	House, Apartment, Makeshift Shelter Collective Shelter	Concrete is less than urban, Timber Wood, Mudbrick	CGI
Rural	Owner, Hosting, Informal Settlements, Squatting Public/Private, Planned Camps built by Cooperatives, Bush	House, Makeshift Shelter, Farm/Agricultural house or infrastructure	Bamboo, Thatch, Wood, Mudbrick	CGI, Zinc, Thatch



Activity Matrix

Shelter Cluster Activity Matrix									
Activity matrix 2022 NAM Strategy									
Activity	Location	Frequency	Duration	Resources	Materials	Equipment	Personnel	Other	Notes
1.  Shelter Cluster Meeting	Shelter Cluster Meeting	Monthly	2 hours	Shelter Cluster Meeting	Shelter Cluster Meeting	Shelter Cluster Meeting	Shelter Cluster Meeting	Shelter Cluster Meeting	Shelter Cluster Meeting
2.  Shelter Cluster Meeting	Shelter Cluster Meeting	Monthly	2 hours	Shelter Cluster Meeting	Shelter Cluster Meeting	Shelter Cluster Meeting	Shelter Cluster Meeting	Shelter Cluster Meeting	Shelter Cluster Meeting
3.  Shelter Cluster Meeting	Shelter Cluster Meeting	Monthly	2 hours	Shelter Cluster Meeting	Shelter Cluster Meeting	Shelter Cluster Meeting	Shelter Cluster Meeting	Shelter Cluster Meeting	Shelter Cluster Meeting
4.  Shelter Cluster Meeting	Shelter Cluster Meeting	Monthly	2 hours	Shelter Cluster Meeting	Shelter Cluster Meeting	Shelter Cluster Meeting	Shelter Cluster Meeting	Shelter Cluster Meeting	Shelter Cluster Meeting
5.  Shelter Cluster Meeting	Shelter Cluster Meeting	Monthly	2 hours	Shelter Cluster Meeting	Shelter Cluster Meeting	Shelter Cluster Meeting	Shelter Cluster Meeting	Shelter Cluster Meeting	Shelter Cluster Meeting
6.  Shelter Cluster Meeting	Shelter Cluster Meeting	Monthly	2 hours	Shelter Cluster Meeting	Shelter Cluster Meeting	Shelter Cluster Meeting	Shelter Cluster Meeting	Shelter Cluster Meeting	Shelter Cluster Meeting
7.  Shelter Cluster Meeting	Shelter Cluster Meeting	Monthly	2 hours	Shelter Cluster Meeting	Shelter Cluster Meeting	Shelter Cluster Meeting	Shelter Cluster Meeting	Shelter Cluster Meeting	Shelter Cluster Meeting
8.  Shelter Cluster Meeting	Shelter Cluster Meeting	Monthly	2 hours	Shelter Cluster Meeting	Shelter Cluster Meeting	Shelter Cluster Meeting	Shelter Cluster Meeting	Shelter Cluster Meeting	Shelter Cluster Meeting
9.  Shelter Cluster Meeting	Shelter Cluster Meeting	Monthly	2 hours	Shelter Cluster Meeting	Shelter Cluster Meeting	Shelter Cluster Meeting	Shelter Cluster Meeting	Shelter Cluster Meeting	Shelter Cluster Meeting
10.  Shelter Cluster Meeting	Shelter Cluster Meeting	Monthly	2 hours	Shelter Cluster Meeting	Shelter Cluster Meeting	Shelter Cluster Meeting	Shelter Cluster Meeting	Shelter Cluster Meeting	Shelter Cluster Meeting

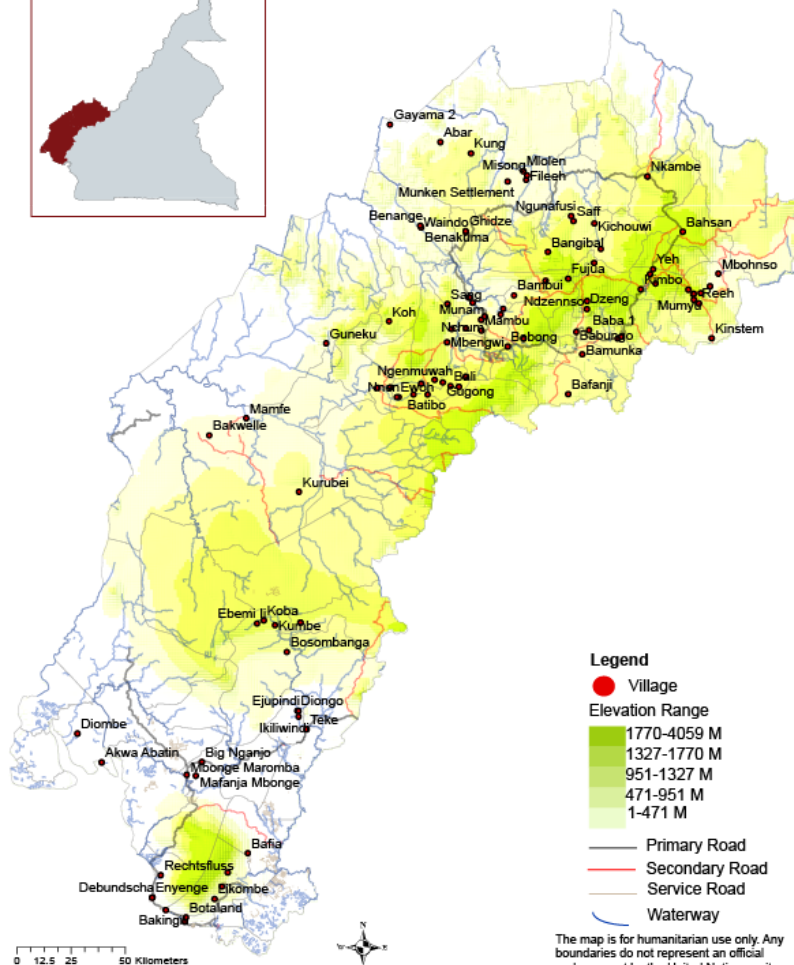


Maps Requested from MSNA

Shelter Cluster NWSW Cameroon
ShelterCluster.org
Coordinating Humanitarian Shelter



OCHA MSNA
Villages that Reported Shelter Support
Source: Key Informants
Feb - Mar 2022



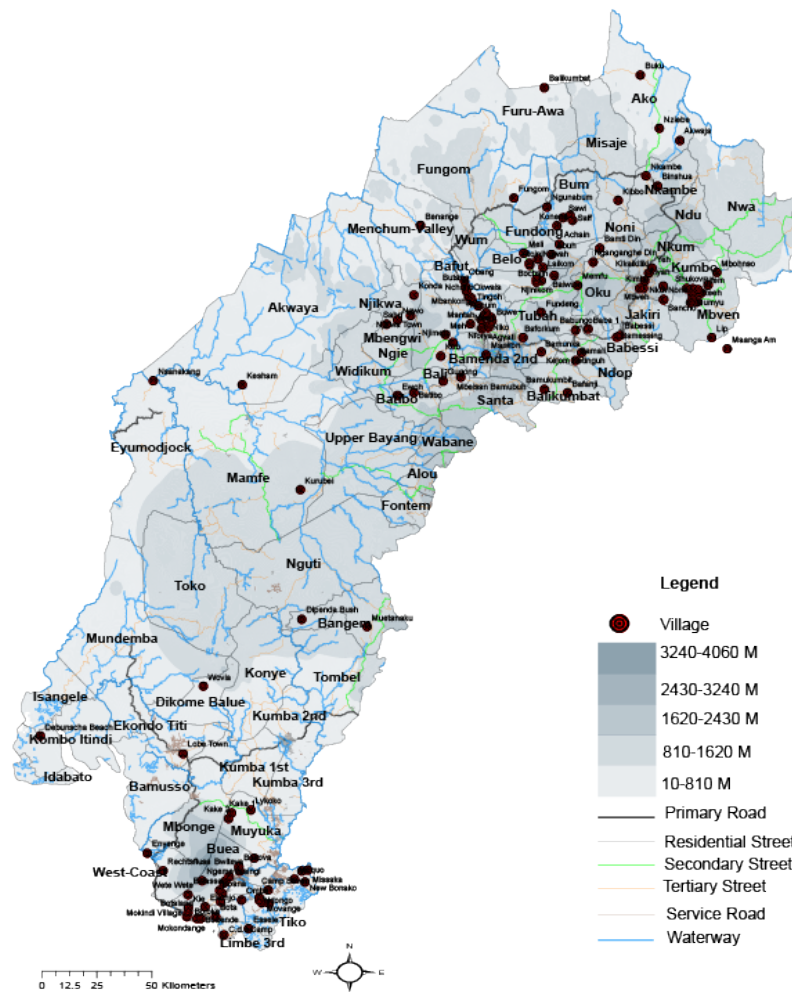
The map is for humanitarian use only. Any boundaries do not represent an official endorsement by the United Nations or its partner agencies.



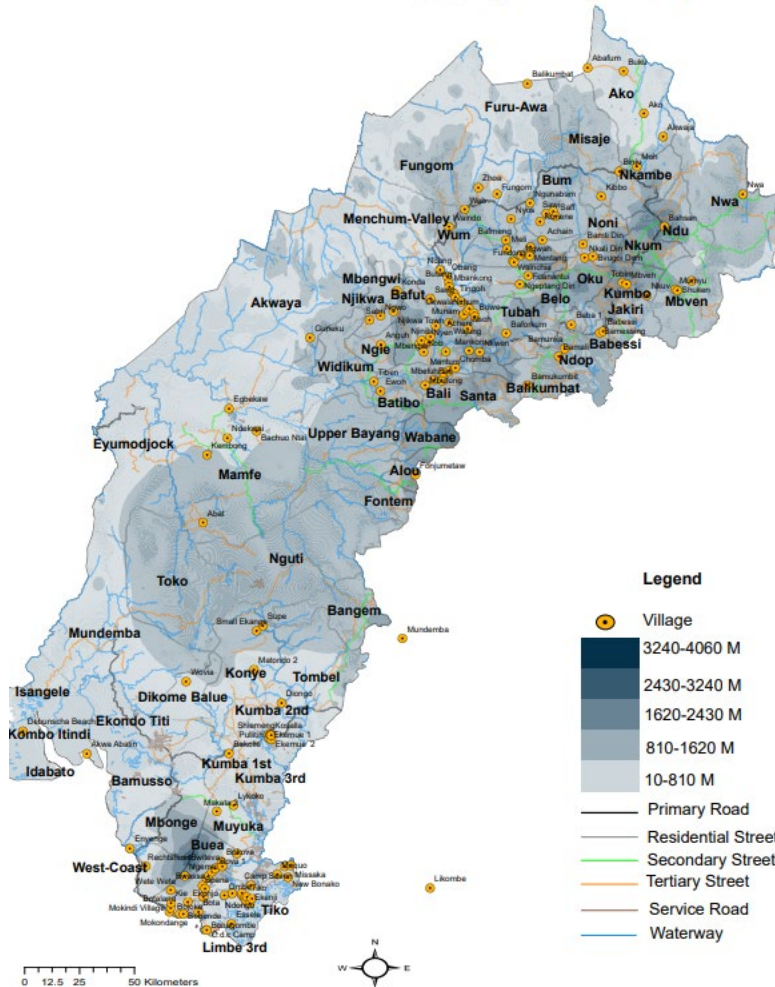
Cameroon Shelter Cluster
ShelterCluster.org
Coordinating Humanitarian Shelter

Shelter Cluster NWSW Cameroon
ShelterCluster.org
Coordinating Humanitarian Shelter

OCHA MSNA:1st Quarter 2022
Villages with NFI Assistance
Problems with Past Assistance: Distribution Site Too Far
Source: Key Informants, Focus Group Discussions



Maps Continued



- All on our NWSW Cameroon Page in PDF form for ease of reviewing for your own programming
- Forthcoming Maps: Market Access, informal settlements to be published in the same area and links shared with partners

Updates from Agencies

- IRC PDM
- Other agency updates

AOB

- Microsoft Teams channel for better collaboration