

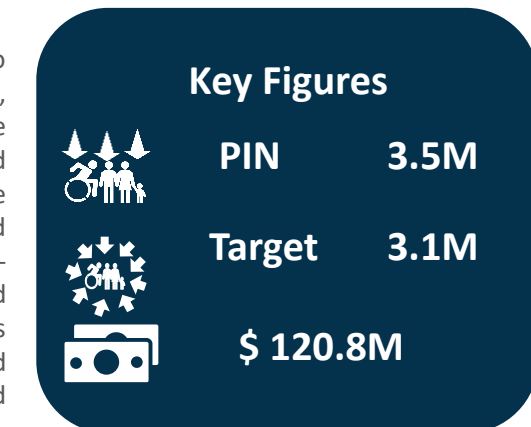
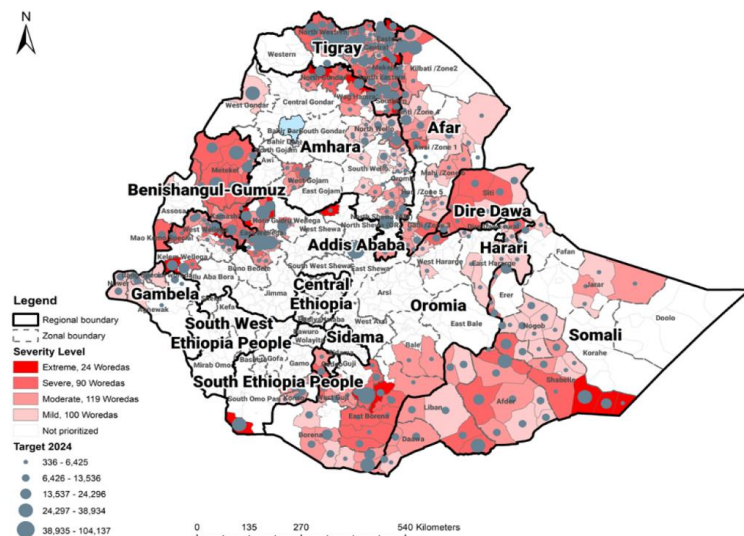
Ethiopia Emergency Shelter and NFI Cluster Prioritization of Need- Q1-2024

Overall Severity

The humanitarian situation in Ethiopia remained dire due to multiple unabated shocks and unaddressed root causes of needs, the compounded effects of the 2020-2022 war in Tigray, the extended Drought and seasonal floods in the southern and southeastern regions of the country, pockets of conflict in the western regions, and the global economic crisis. Overcrowded shelters, limited or no household items, lack of privacy, and sub-standard living conditions continue to expose the displaced and returned populations to multiple protection risks. The Cluster's response priorities aim to align with the population's needs and reduce humanitarian consequences associated with health and protection risks as a result of inadequate living conditions.

This prioritization document was prepared to support donor and partners' decisions for the next three months (January to March). The prioritization factors are access, security, recurring displacement, neglected responses, the number of displacements, and existing cluster capacities. Out of the 21 woredas prioritized for the 4th quarter of 2023 as Extreme in severity of needs, only seven received shelter and NFI assistance covering 39K people, three-fourths of whom in towns of the North Western zone of Tigray with large IDP populations (Adi Daero, Asgede, Endabaguna, Shire/Indasilasie, and Sheraro), 18% in the Abergele woreda of Amhara's Wag Hamra zone, and 9% in the East Imi woreda of Somali's Shabelle zone. This is partly because of resource constraints and limited coordination with the sub-national clusters; **we encourage partners to coordinate with the sub-national clusters.**

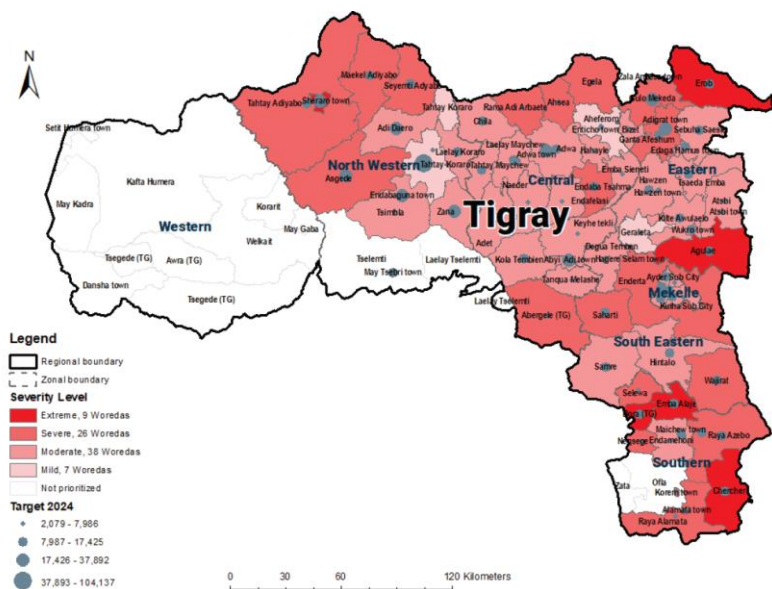
The prioritized Woredas are determined by filtering through the number of displaced people, available assistance in stock and pipeline, ongoing conflicts, access, recurring displacements, and neglected responses. Based on the Cluster thresholds and subsequent analysis, the Cluster has identified 24 Woredas in Amhara, Oromia, Somali, South, and Tigray regions as Extreme severity category, 91 Woredas as Severe, and the rest of the Woredas as Mild and Moderate in terms of needs.



Region	Extreme	Severe
Afar		4
Amhara	3	11
Benishangul-Gumuz		10
Gambela		
Oromia	8	26
Somali	3	14
South Ethiopia	1	
Tigray	9	26
Total	24	91

Ethiopia ES/NFI Cluster Q1-2024 Prioritized Woredas and Activities

Tigray- Prioritized Woredas and Activities



Key Figures



Target 916K

\$ 34.1M

Severity

Extreme

174K IDPs
59K Returnees in 9 Woredas

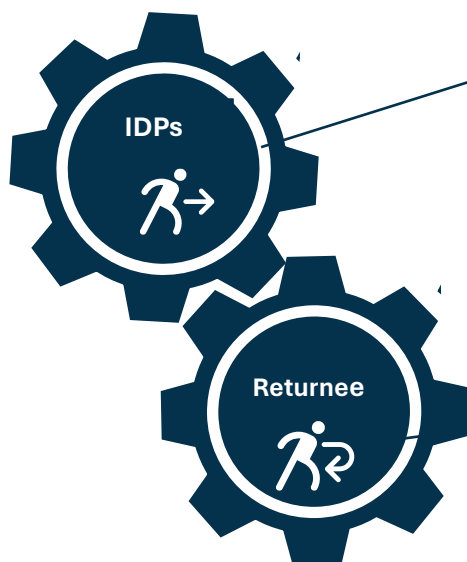
Severe

145K IDPs
137K Returnees in 26 Woredas

Moderate

195K IDPs
155K Returnees in 38 Woredas

ES/NFI Cluster Priority Activities



Shelter

- Relocation of the IDPs from Schools
- Rehabilitation of the existing IDP sites



NFI/ESNFI

- ES/NFI kits for new arrivals

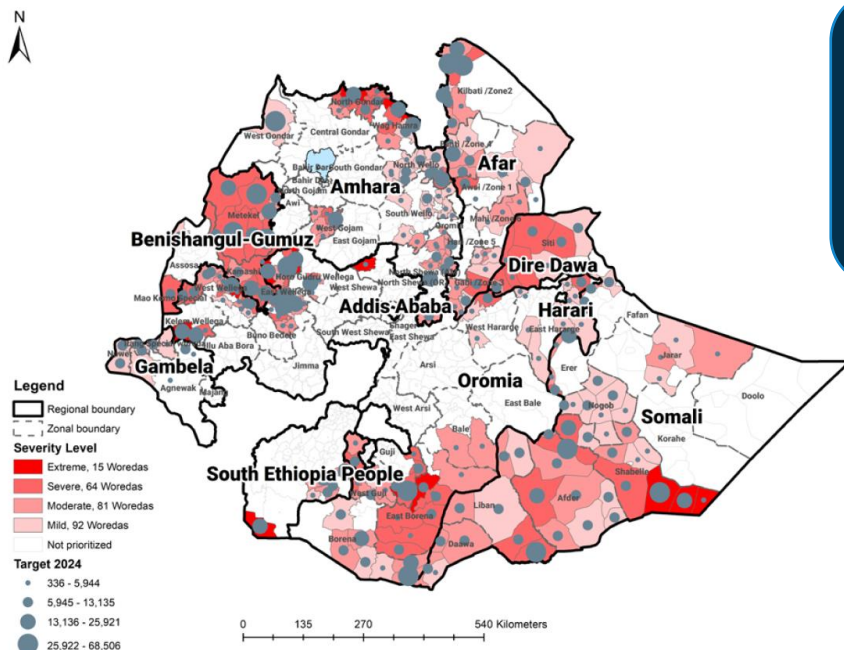


Shelter

- Emergency Shelter Repair kits
- HLP and Technical support

Ethiopia ES/NFI Cluster Q1-2024 Prioritized Woredas and Activities

Afar, Amhara, Oromia, Somali, and South Regions- Prioritized Woredas and Activities



Key Figures



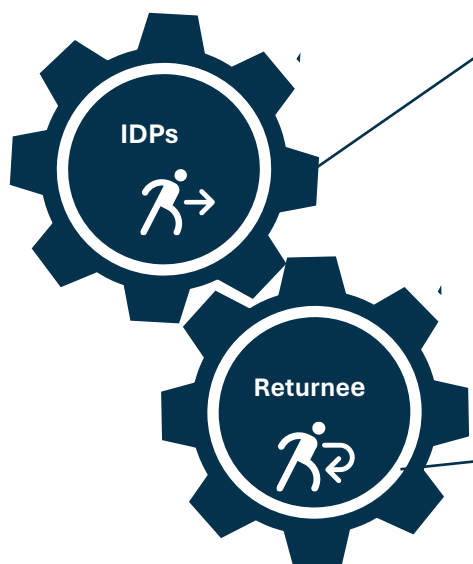
Target 2.3M

\$ 86.7M

Severity

Extreme	228K IDPs 36K Returnees in 15 Woredas
Severe	538K IDPs 238K Returnees in 64 Woredas
Moderate	195K IDPs 155K Returnees in 38 Woredas

ES/NFI Cluster Priority Activities



Shelter

Amhara, Southern Oromia, South and Somali Regions

- Distribution of ES kits
- Provision of Rental Supports.



NFI/ESNFI

In all prioritized locations

- Distribution of ESNFIs or NFI kits



Shelter

In Afar, Amhara, Western Oromia, Somali, and South Regions

- Emergency Shelter Repair kits
- HLP and Technical support

Ethiopia ES/NFI Cluster O1-2024 Prioritized Woredas and Activities

Prioritized Woredas - Extreme

Region	Zone	Woreda	New Target	Severity level	Region	Zone	Woreda	Target	Severity level
Amhara	North Gondar	Addi Arekay	21,038	Priority 1	Tigray	North Western	Sheraro town	37,892	Priority 1
		Abergele (AM)	15,137				Shire Endaslasie town	104,137	
	Wag Hamra	Tsagbeji	17,967				Endabaguna town	25,084	
Oromia	West Wellega	Guto Gida	32,769				May Tsebri town	11,160	
	East Wellega	Kiremu	50,950			Eastern	Erob	10,655	
		Aga Wayu	6,837				Agulae	9,041	
	North Shewa (OR)	Wara Jarso	5,306			Southern	Bora (TG)	8,761	
	Guji	Aga Wayu	6,495				Emba Alaje	17,178	
	Kelem Wellega	Denbi Dollo town	19,478				Chercher	8,835	
		Anfilo	16,767		Somali	Shabelle	Kelafo	34,135	
	East Borena	Gora Dola	9,775				Mustahil	14,700	
South Ethiopia	South Omo_Pas	Dasenech /Kuraz	25,006				Ferfer	5,833	