

Monthly Achievements

Shelter/NFI Cluster members are actively responding to the needs of both newly internally displaced persons and protracted IDPs in north-west Syria.

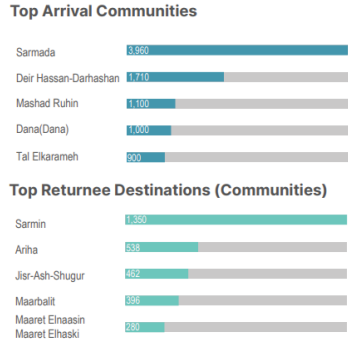
In September 2024 alone, NFI assistance was provided to over 580 individuals in the form of core NFI kits.

Additionally, the shelter needs of over 40, 306 individuals were met in September including infrastructure improvements in IDP sites, dignified shelters, emergency shelter provision, and rehabilitation of damaged or unfinished shelters.

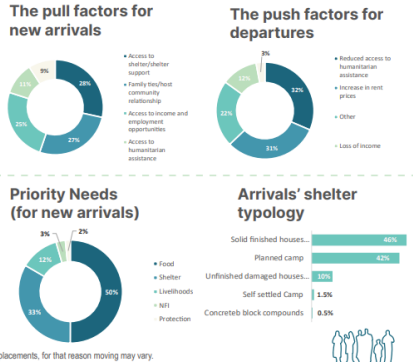
Second Quarter Displacement Movements Report

In the second quarter over 21,000 people were displaced in Idleb and Aleppo, particularly from Dana, Maaret Tamsrin, Afrin, Idleb and Sarmin due to mainly reduced access to humanitarian assistance, increase in rental cost, loss of income.

Most of the affected population arrived to Dana, Atareb, and Idleb sub-districts. Over 8,000 displaced people returned to mainly Ariha, Sarmin, Idleb, Jisr-Ash-Shugur and Badama.



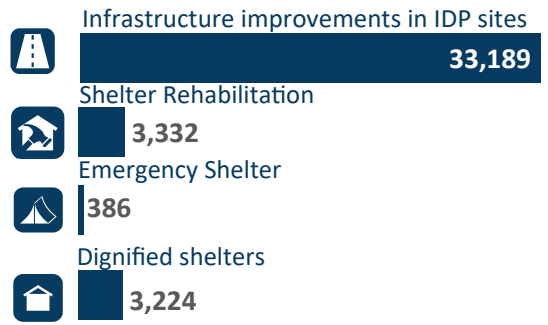
* This figures reflect the number of movements between Apr-June 2024, noting that individuals may have been exposed to multiple displacements, for that reason moving may vary.



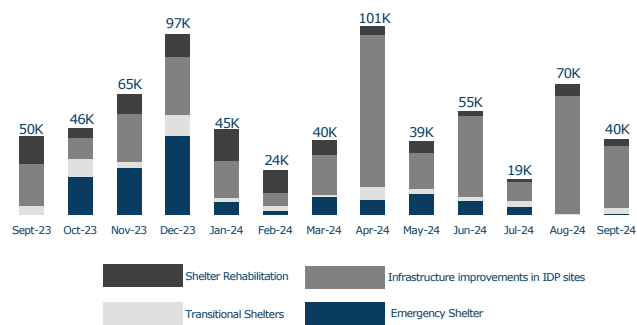
Shelter response



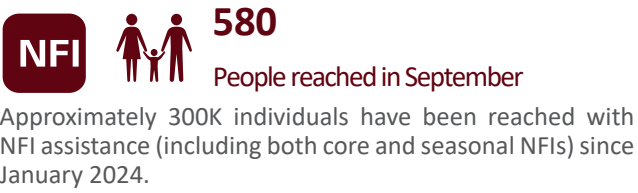
People reached with shelter activity



Trend analysis of people reached by shelter activity per month (2023-2024)



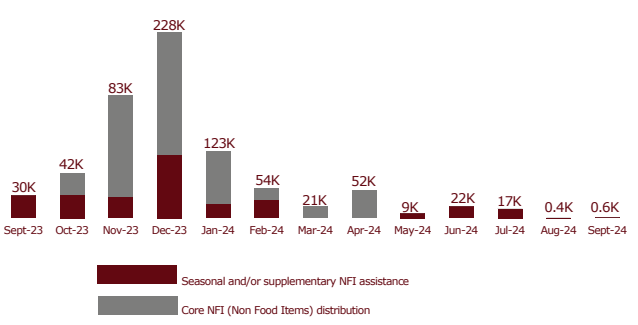
NFI response



People reached with in-kind items assistance



Trend analysis of people reached by NFI activity per month (2023-2024)



For more details about the IDP sites in north-west Syria please see CCCM's ISIMM dashboard

Winter Targeting Technical Selection Criteria Training (Online) - 12th September

Due to funding constraints, the S/NFI Cluster targets highly vulnerable households during cold winter periods. Winter increases respiratory infections, leading to higher hospitalization, morbidity, and mortality rates. Without adequate warmth and shelter, the risk of respiratory infections, hypothermia, and preventable deaths rises, especially for children and the elderly.

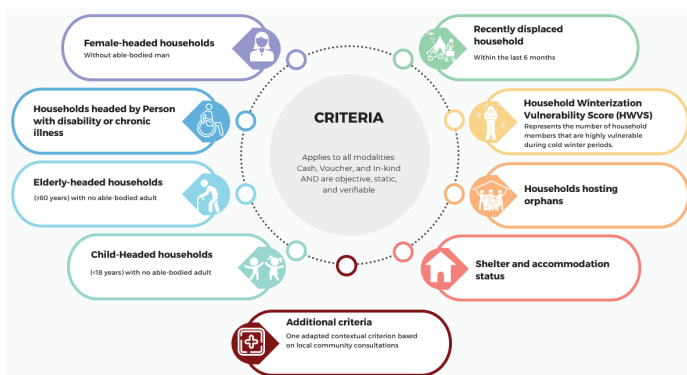
The S/NFI Cluster has guidelines to identify highly vulnerable families including: female-headed households, households led by persons with disabilities or chronic illnesses, elderly-headed households (60+ years) without able-bodied adults, child-headed households, families with pregnant/lactating women or people with disabilities or severe chronic diseases, and households hosting orphans.

This prioritization ensures that the most vulnerable populations in the hardest-hit areas receive timely and effective winterization assistance.

The meeting was attended by 42 participants from the cluster membership.

Key details of the session include:-

- Introduction to the new guidance: Basic Targeting Guidelines for Winterization and NFI Assistance
- Practical examples and score practice
- Targeted and prioritized communities



Targeting criteria overview

Dignified Shelter Training (Arabic) Session - 25th September

This training aimed to build the cluster members on dignified shelter practices within the IDP sites in NW Syria as well as introduce in detail the new developed guidance for staff based in North West Syria.

This training was a follow-up to the session held on August 27th for participants in Gaziantep and was attended by 55 participants from 27 organizations.

Emergency Response Review Peer to Peer Workshop - 24th September

The Shelter NFI Cluster and Human Appeal co-hosted a workshop to enhance emergency response capabilities in North-West Syria (NWS). The event aimed to improve coordination and knowledge sharing among humanitarian organizations. Attendees included members from INGOs, LNGOs, IOs, UN agencies, and the Cluster's Strategic Advisory Group (SAG), ensuring diverse representation.

35 participants from 32 organizations attended, with seven experienced members presenting insights on large-scale emergency responses. The workshop facilitated peer-to-peer learning and best practice sharing.

Key objectives:

- Share best practices and lessons from Emergency Response Interventions
- Identify response challenges
- Develop strategies for more effective future emergency responses in NWS



The workshop aimed to strengthen the humanitarian community's capacity for swift and effective emergency response in NWS.

Workshop Recommendations:

- **Emergency Response Planning**: Develop and update a comprehensive Emergency Response Plan (ERP) with clear roles, responsibilities, risks, indicators, and scenarios
- **Funding Flexibility**: Advocate for flexible emergency response funds from donors
- **Streamlined Procedures**: Implement waivers for emergency response procedures to reduce delays
- **Unified Tracking System**: Establish a unified platform for incident and response tracking among CCCM, SNFI, and CWG clusters
- **Enhanced Coordination**: Improve coordination among organizations for better stock management and resource allocation
- **Inventory Management**: Implement a robust warehouse management system for emergency stocks
- **Beneficiary Verification**: Improve beneficiary verification processes, including 100% verification by cluster members
- **Standardized Packages**: Create standardized assistance packages for different types of emergencies (e.g., earthquakes, displacements, natural disasters)
- **Local Capacity Building**: Enhance local organizations' capacity to manage cash distributions and emergency responses
- **Data Sharing & Coordination**: Improve data sharing and coordination among actors to avoid duplication of efforts
- **Long-term Support**: Explore options for transitioning one-off emergency aid recipients into regular assistance programs for the most vulnerable